

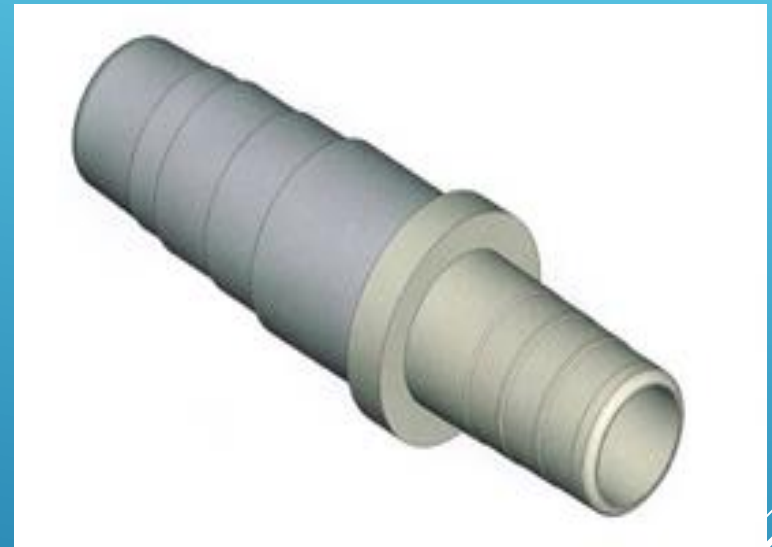
# URO CONCEPTS INC.

## INTRODUCING ~~~ ANTI-REFLUX CONNECTOR

**NEW !**

**Anti-Reflux (one-way check valve) engineered INSIDE our connector that helps prevent urine back-flow.**

**Does not impede  
urine flow.**



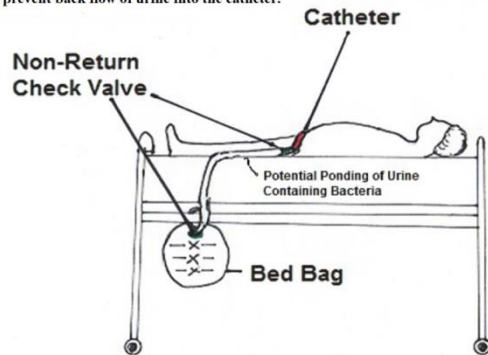
**AVAILABLE Q1 2022**

**Patented product of Uro Concepts Inc.**

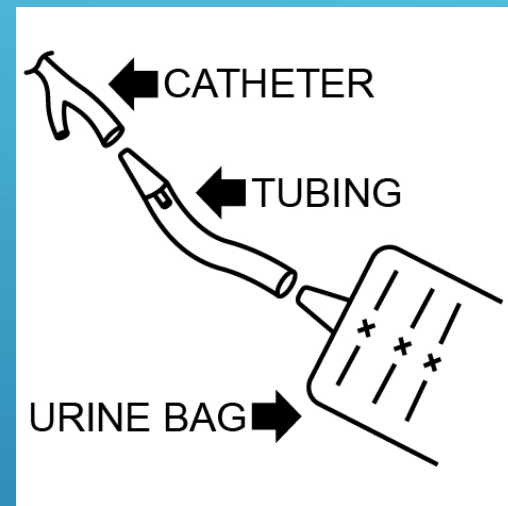
# UROLOGY PRODUCTS THAT WILL BENEFIT FROM OUR ANTI-REFLUX CONNECTOR

## Bed Bag

If patient lifts leg or rolls over in bed, it may elevate the tubing which could cause urine, contaminated with bacteria, to enter the catheter. URO Saf-Gard helps prevent back flow of urine into the catheter.



## Leg Bag



## Extension Tubing



# New Improvement for existing LEG BAGS & BED BAGS

Commonly used INTAKE VALVE in leg bags and bed bags have two separate components:

- ▶ Connector
- ▶ Anti-Reflux – most commonly used is a 2-piece plastic (seamed on outside edges) that is attached to the connector. (This has been known to have a high rate of failure when pressure is on the bag.)

Our new and patented

## **ANTI-REFLUX COMPONENT**

Contains both the connector and anti-reflux in one component. It is an improvement to the current Intake Valves currently used in most leg bags and bed bags.

Manufacturing: Easy conversion to our connector.

Connector has passed the sterilization process.

# NEW Product: Anti-Reflux Extension Tubing

## EXTENSION TUBING

(new position of anti-reflux)

HCPCS Code A4331

No utilization limits.



Inside the urine collection system, including extension tubing, is wet & warm; a perfect environment for bacteria to live. Urine may contain bacteria.

To help reduce infections it is recommended to prevent backflow of urine from re-entering the catheter and ultimately the patient.

# **BENEFITS OF AN ANTI-REFLUX EXTENSION TUBING**

**Prevent urine from re-entering the catheter and human body  
when:**

- ▶ **Moving a patient for surgery, test, MRI, etc.**
- ▶ **Transporting a patient to new facility**
- ▶ **When staff changes soiled bedding**
- ▶ **Lifting of collection bag for transport or movement.**

**Urine may contain bacteria; a cause of infections.**

**It is important to prevent urine backflow  
from re-entering the catheter/human.**

# TESTIMONIAL

*After completing over 200 hours of clinical rotation (in an ER) for advance training, he witnessed many incidents where urine re-entered the catheter from the tubing due to movement of patient or lifting of collection bag for movement and transport.*

**“I recently learned about new extension tubing with a one-way valve designed to help prevent backflow of urine into the catheter. It is my opinion that this new tubing may help to reduce contamination of the bladder, ureters, and/or kidneys from urine re-entering the patient. This re-entry may contribute to the already high incidence of urinary tract infections (UTI) in catheterized patients.”** (Patrick H., AEMT)

## Study found:

- ▶ It took 14 days to colonize the single valve system
- ▶ It took more than 21 days to colonize the double non-return valve system.
- ▶ Conclusion: that the double non-return valve increased the time necessary for bacterial colonization of the catheter.
- ▶ Suggesting that a double non-return valve system is able to be used on a long term without increasing the risk of infection in a catheterized bladder model (patient) with twice daily bag emptying.

One-way check valve in extension tubing adds a second anti-reflux protection in collection system. (The first is on the intake port of the collection bag.)

# STUDY TO HELP REDUCE CAUTI

BY WENZLER-RÖTTELE ET AL

**For more information, contact:**

**uroconcepts11@yahoo.com**

**TEST:**

- ▶ **Duration of time of 100 ml of water test:**
- ▶ **Tube/connector w/o check valve - 4.6 seconds**
- ▶ **Anti-reflux connector- 5.1 seconds**
- ▶ **(Both within margin of error or practically the same.)**
  
- ▶ **Compared to micro check valve - 57 seconds**

**DOES NOT IMPEDE URINE FLOW**

